

This drawing is only to the stated scale if it is printed correctly. MFLP cannot accept responsibility for the incorrect scaling of drawings printed by third parties. All dimensions are in mm unless otherwise stated.

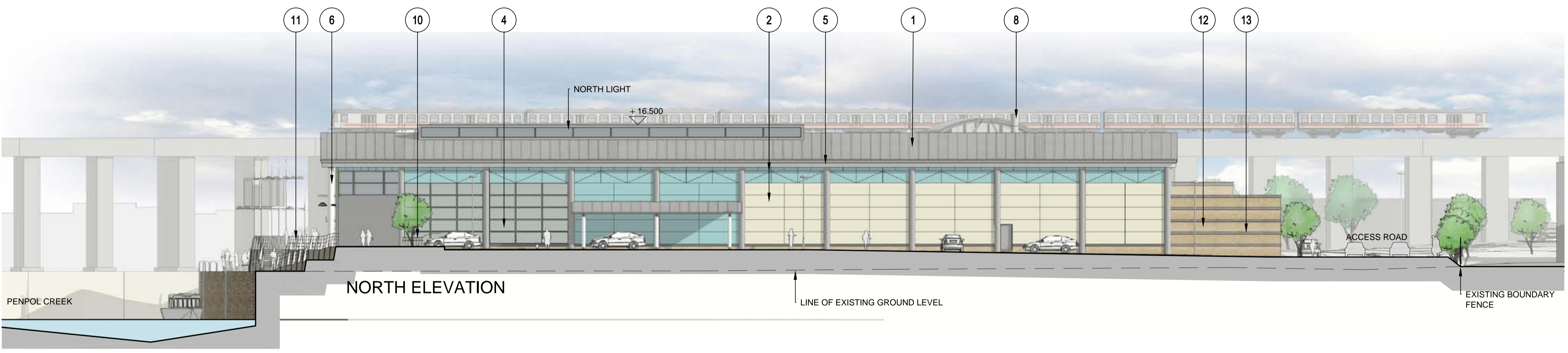
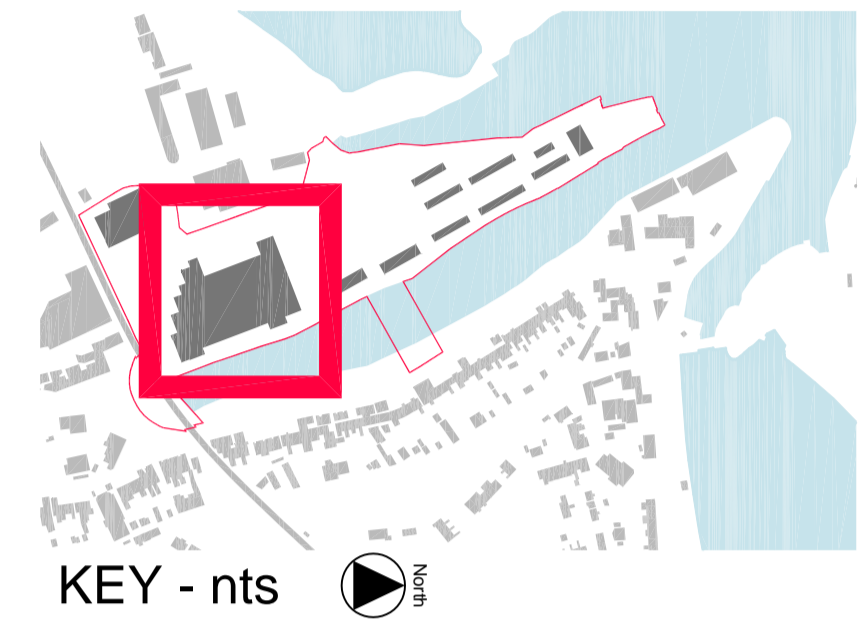
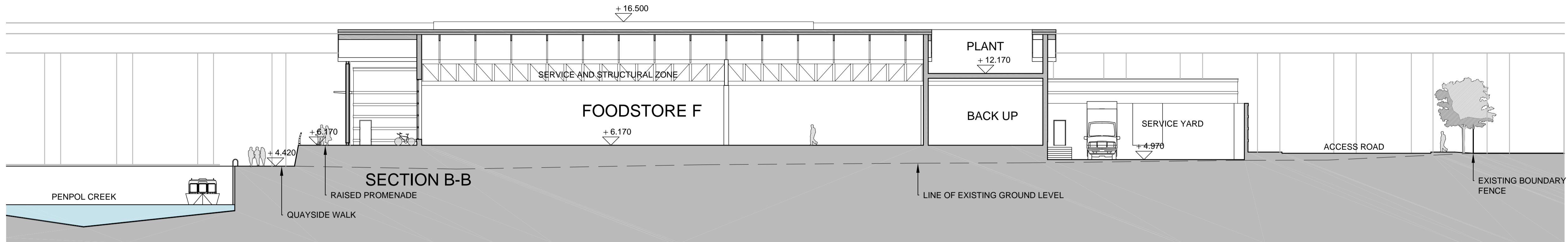
If this drawing forms part of an application for planning permission on behalf of the applicant named below, it shall not be used for any other purpose without the express permission of Mountford Pigott LLP.

This drawing may incorporate information from other professionals. Mountford Pigott LLP cannot accept responsibility for the integrity and accuracy of such information. Any clarification and/or additions that are required appearing to such information should be sought from the relevant profession or their appointment representative as listed below.

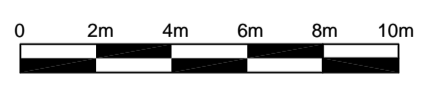
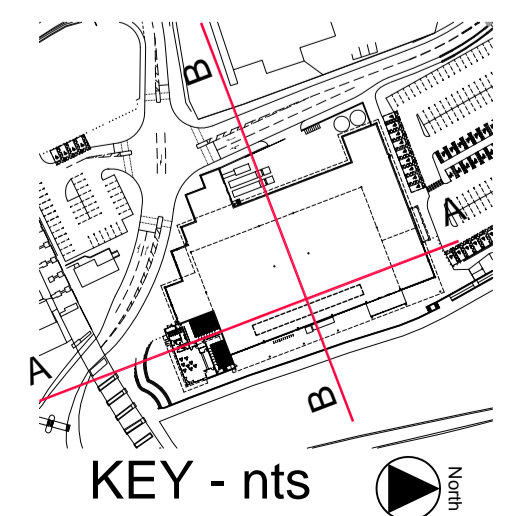
LIST OF INFORMANTS:  
 ORDNANCE SURVEY  
 TOPOGRAPHICAL SURVEY  
 LANDSCAPE - ASPECT LANDSCAPE PLANNING  
 HIGHWAYS - SAVELL BIRD & AXON  
 BRIDGE & RETAINING WALLS - BURO HAPPOLD

REVISIONS: DATE: 08.12.10  
 SUBMITTED FOR PLANNING: DRN: CB  
 REV: A

NOTE: SIGNAGE SUBJECT TO SEPARATE PLANNING APPLICATION



- SCHEDULE OF MATERIALS:
1. STANDING SEAM METAL ROOF
  2. TRESPA WALL PANELS
  4. POWDER COATED ALUMINIUM WINDOW FRAMES DOUBLE GLAZED
  5. POWDER COATED ALUMINIUM FASCIA
  6. HIGH QUALITY MARINE STANDARD PAINT FINISH TO STEEL COLUMNS
  8. STAINLESS STEEL FLUES SERVING ENERGY CENTRE
  9. POWDER COATED FINISH TO LOUVRED SCREEN WALLS
  10. STAINLESS STEEL RAM RAID BOLLARDS
  11. STAINLESS STEEL RAILINGS (SEE ASPECT LANDSCAPE PLANNING DETAILS)
  12. SPLIT FACE BLOCKWORK
  13. SMOOTH BLOCKWORK BANDING



MountfordPigott  
 FOODSTORE AND CINEMA  
 SECTION + ELEVATION  
 0179-P-106-A  
 1:200 @ A1  
 DRAWN BY: CB  
 02.12.10 ©