

This drawing is only to the stated scale if it is printed correctly. MFLP cannot accept responsibility for the incorrect scaling of drawings printed by third parties. All dimensions are in mm unless otherwise stated.

If this drawing forms part of an application for planning permission on behalf of the applicant named below, it shall not be used for any other purpose without the express permission of Mountford Pigott LLP.

This drawing may incorporate information from other professionals. Mountford Pigott LLP cannot accept responsibility for the integrity and accuracy of such information. Any clarification and/or additions that are required appertaining to such information should be sought from the relevant profession or their appointment representative as listed below.



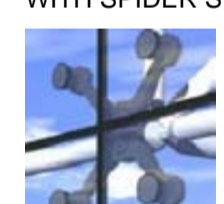

LIST OF INFORMANTS:
 ORDINANCE SURVEY
 TOPOGRAPHICAL SURVEY
 LANDSCAPE - ASPECT LANDSCAPE PLANNING
 HIGHWAYS - SAVELL BIRD & AXON
 BRIDGE & RETAINING WALLS - BURO HAPPOLD

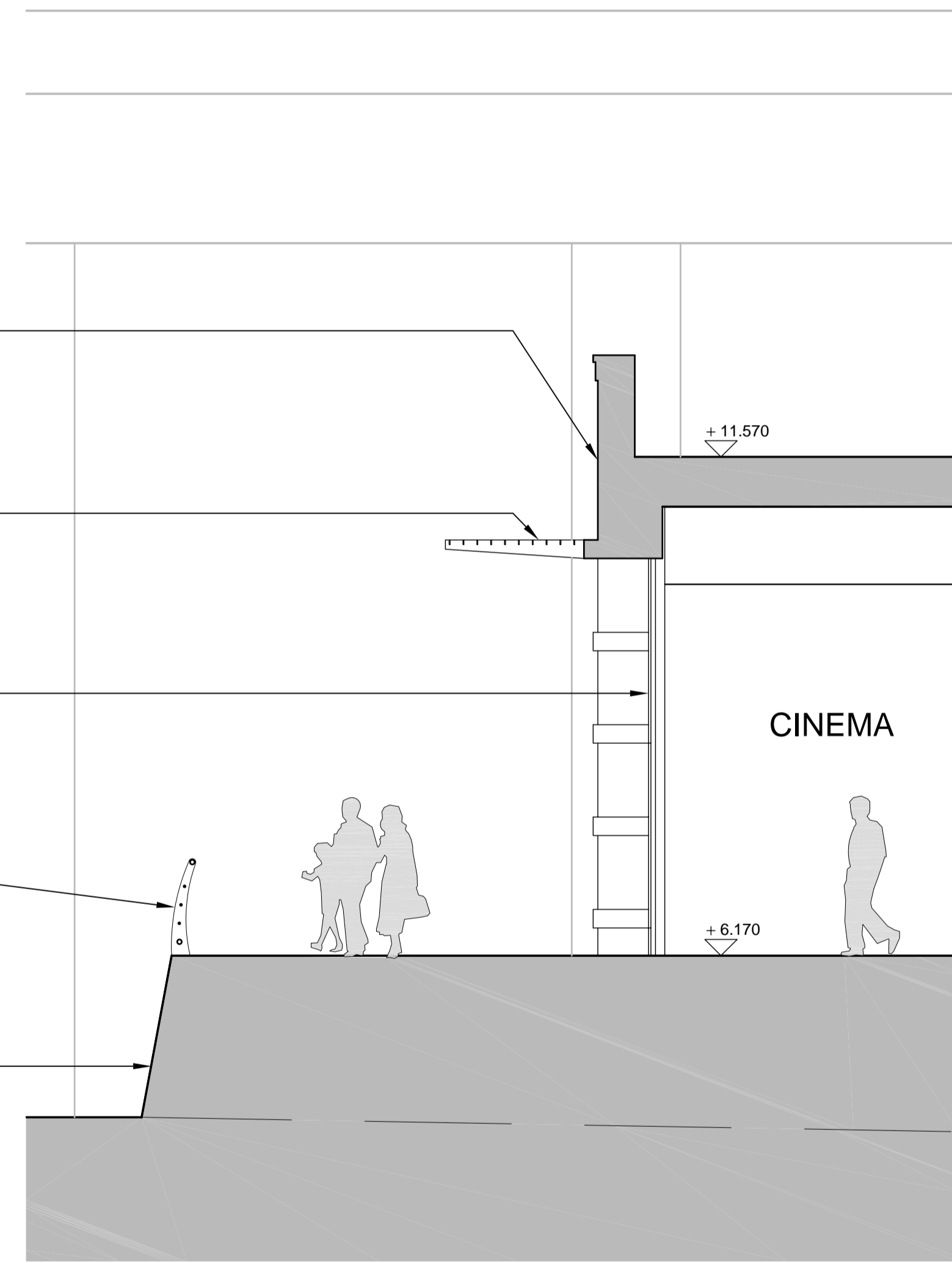
REVISIONS
 ISSUED FOR PLANNING

DATE: 08.12.10
 DRN: CB
 REV: A



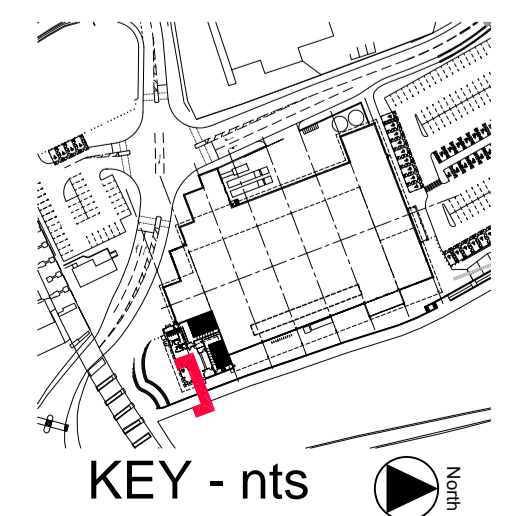
PERSPECTIVE ELEVATION nts

- SPLIT FACE BLOCKWORK WITH SMOOTH BLOCKWORK BANDING

- POWDER COATED ALUMINIUM BRISE SOLEIL

- STRUCTURAL GLAZING WITH SPIDER SUPPORTS

- STAINLESS STEEL RAILINGS (SEE ASPECT PLANNING DETAILS)

- FOR PROMENADE RETAINING WALL SEE BURO HAPPOLD DRAWINGS AND DETAILS



DETAIL SECTION OF CINEMA

NOTE: SIGNAGE SUBJECT TO SEPARATE PLANNING APPLICATION
 GOONVEAN ENGINE NOT PART OF APPLICATION



MountfordPigott
 FOODSTORE AND CINEMA
 DETAIL SECTION + ELEVATION
 0179-P-113-A
 1:50 @ A1
 DRAWN BY: CB
 06.12.10